

STG Series



Supports voice and data-centric services

Ready for next-generation SONET network elements

Upgradable from OC-3/STM-1 to OC-48/STM-16

SONET, SDH, DSn and PDH testing in one package



Fiber-optic T&M,
monitoring, manufacturing
and assembly solutions

EXFO

One Device for Evolving Needs

The STG™ Series of handheld testing products provides full test capabilities for DS0, DS1, E1, E3, DS3, 10/100 Mbps and Gigabit Ethernet, OC-3/STM-1, OC-12/STM-4, OC-48/STM-16 and SONET/SDH Overhead Processing. The STG Series offers both telecom and datacom performance management on the same platform and its innovative Smart User Interface (SUI) requires little training to use, even in the most complex testing scenario.



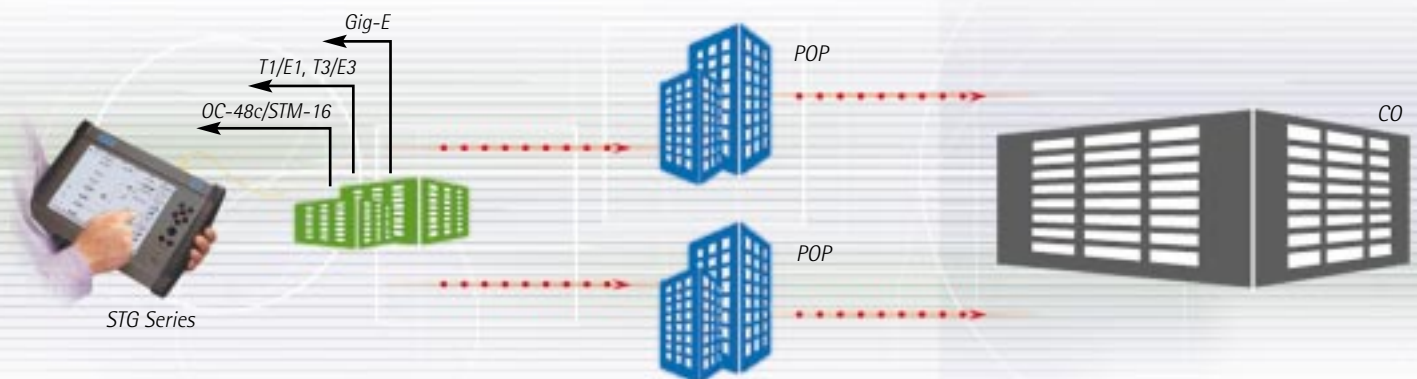
Key Features

- Easy-to-use Smart User Interface (SUI)
- Automated test scripting and remote management
- Ergonomic design; handheld; robust, rubberized enclosure
- Large, color touchscreen

Benefits

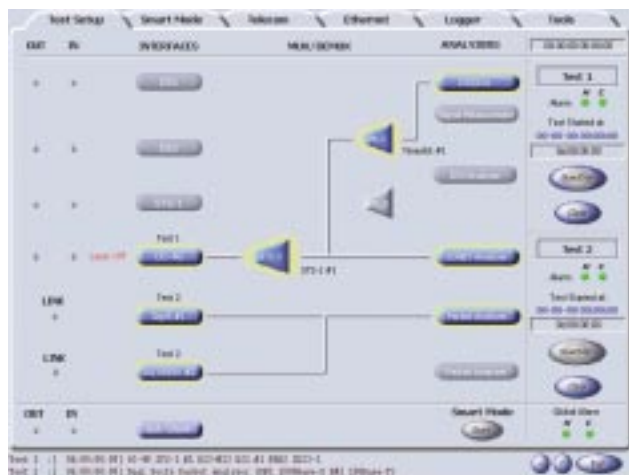
- Supports telecom and datacom
- Evolvable from OC-3/STM-1 to OC-48/STM-16
- Support for SONET, SDH or both
- Ready for Ethernet testing: 10 Mbps, 100 Mbps and Gigabit
- Intuitive software for circuit browsing and developing test scenarios
- Flexible operation for field or office use

One Test Set for Telecom and Datacom

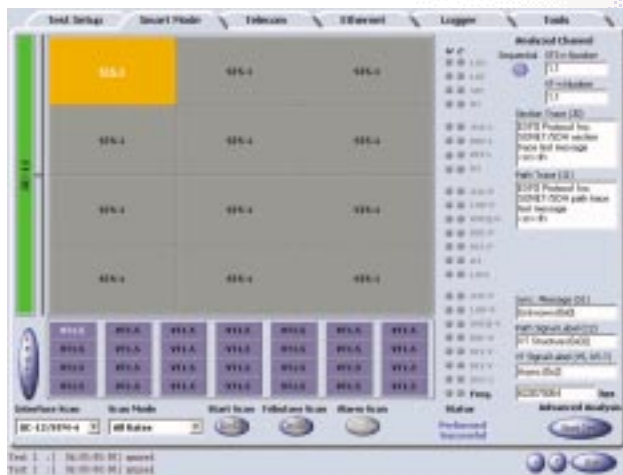


STG Series Smart User Interface

Speed up data management, tailor configuration and test formats with the easy-to-use comprehensive Smart User Interface.



Test Setup Screen



Smart Mode Screen

Specifications

	SONET	SDH
Test Capabilities	DS0, DS1, VT1.5, DS3, STS-1, 10/100 Mbps and Gigabit Ethernet, OC-3, OC-12 and OC-48 including SONET Overhead Processing	64Kbps, 1.5M, 2M, 34M, 45M, 10/100 Mbps and Gigabit Ethernet, STM-1, STM-4 and STM-16 including SDH Overhead Processing
Telecom Interfaces	<p>Electrical (input and output ports):</p> <ul style="list-style-type: none"> - Conformed to Bellcore GR-499 standard: DS1, DS1 (BITS) and DS3 - Conformed to Bellcore GR-253 standard: STS-1 <p>Optical (input and output ports):</p> <ul style="list-style-type: none"> - Conformed to Bellcore GR-253 standard: OC-3, OC-12 and OC-48 	<p>Electrical (input and output ports):</p> <ul style="list-style-type: none"> - Conformed to ITU-T G.703 standard: 1.5M/2M, 1.5M/2M (external clock) and 34M/45M <p>Optical (input and output ports):</p> <ul style="list-style-type: none"> - Conformed to ITU-T G.707, G.841, G.957 and G.958 standards: STM-1, STM-4 and STM-16
Datacom Interfaces (included with Packet Blazer™ option)	<ul style="list-style-type: none"> • 2x 10/100/1000 Base-T (input/output ports) • 2x 1000 Base-SX/LX (input/output ports) 	<ul style="list-style-type: none"> • 2x 10/100/1000 Base-T (input/output ports) • 2x 1000 Base-SX/LX (input/output ports)
Management Ports	<ul style="list-style-type: none"> • Serial V.24 (RS-232C) port (DB-9) • 10Base-T LAN port (RJ-45) • USB port 	<ul style="list-style-type: none"> • Serial V.24 (RS-232C) port (DB-9) • 10Base-T LAN port (RJ-45) • USB port
Measurements	<ul style="list-style-type: none"> • G.821 • Electrical and optical signal frequency and power 	<ul style="list-style-type: none"> • G.821 • Electrical and optical signal frequency and power

General Specifications

Status and Alarm Indicators	Power Current status History status LCD 10.4 inch display
Power	DC jack / AC adapter
Size (W x H x D)	38.4 cm x 10.4 cm x 25.8 cm (15 1/8 in x 4 1/8 in x 10 3/16 in)
Operating Temperature	0 °C to 40 °C (32 °F to 104 °F)

Laser Safety

21 CFR 1040.10, IEC 60825-1: Ed. 1.1 1998 : CLASS 1 LASER PRODUCT

Connector Panel



Find out more about EXFO's extensive line of high-performance portable instruments by visiting our Web site at www.exfo.com

Rugged Handheld Solutions <ul style="list-style-type: none"> • OLTS • Power Meter • Light Source • Talk Set 	UNIVERSAL TEST SYSTEM <ul style="list-style-type: none"> • OTDR • OLTS • ORL • Switch 	Optical Fiber <ul style="list-style-type: none"> • OSA • PMD • Chromatic Dispersion Analyzer • Multiwavelength Meter 	DWDM Test Systems <ul style="list-style-type: none"> • 10/100 and Gigabit Ethernet • SONET/SDH (DS0 to OC-192c) • SDH/PDH (64Kb/s to STM-64c) 	Protocol
--	--	---	---	-----------------

CORPORATE HEADQUARTERS	465 Godin Avenue	Vanier (Quebec) G1M 3G7 CANADA	Tel.: 1 418 683-0211 . Fax: 1 418 683-2170
EXFO AMERICA	1201 Richardson Drive, Suite 260	Richardson TX 75080 USA	Tel.: 1 800 663-3936 . Fax: 1 972 907-2297
EXFO EUROPE	Le Dynasteur, 10/12 rue Andras Beck	92366 Meudon la Forêt Cedex FRANCE	Tel.: +33.1.40.83.85.85 . Fax: +33.1.40.83.04.42
EXFO ASIA-PACIFIC	151 Chin Swee Road, #03-29 Manhattan House	SINGAPORE 169876	Tel.: +65 6333 8241 . Fax: +65 6333 8242
EXFO PROTOCOL	2650 Marie-Curie	St-Laurent (Quebec) H4S 2C3 CANADA	Tel.: 1 514 856-2222 . Fax: 1 514 331-3608
TOLL-FREE (USA and Canada)	Tel.: 1 800 663-3936	www.exfo.com • info@exfo.com	

EXFO has made every effort to ensure that the information contained in this specification sheet is accurate. However, we accept no responsibility for any errors or omissions, and we reserve the right to modify design, characteristics and products at any time without obligation. Units of measurement in this document conform to SI standards and practices.
Contact EXFO for prices and availability or to obtain the phone number of your local EXFO distributor.
 For the most recent version of this spec sheet, please go to the EXFO Web site at <http://www.exfo.com/support/techdocs.asp>
 In case of discrepancy, the Web version takes precedence over any printed literature.
 All names, trademarks, products and services mentioned are registered or unregistered trademarks of their respective owners.

