

## RC953-8FE16E1 Inverse Multiplexing Ethernet Gateway

RC953-8FE16E1 is an Inverse Multiplexing Ethernet Gateway that delivers Ethernet services over existing TDM transportation network. It can be deployed in central site for aggregating subscribers or in customer premises enabling Inverse Multiplexing for enlarging much more bandwidth. RC953-8FE16E1 provides 8 Ethernet ports and 16 E1 ports for subscribers and functions as a bridge between IP-based network and leased

circuits. Additionally its advanced features such as automatic E1 link adjustment, Ethernet port trunking (Link Aggregation for redundant Ethernet Access) and redundant power supply provide our carriers a cost-effective, flexible and reliable solution for high-quality Ethernet Service delivery by using TDM network resources.

### Feature

Working mode	*Single E1 Mode for aggregating up to 16 remote sites (with RC952 located in remote sites) *Inverse Multiplexing mode for flexibly transmitting Ethernet Service over multiple E1 links (with RC953-FE4E1/8E1 in remote sites)
E1 mode	*Single E1 Mode Framed E1 and Unframed E1 mode *Inverse Multiplexing Mode Framed E1 mode (PCM31, FAS+CRC4 by default)
Automatic E1 Link Adjustment	In Inverse Multiplexing mode, RC953-8FE16E1 can automatically adjust the E1 link capacity of transmission channel if one or more E1 link fails and assures the high-reliable Ethernet data delivery
Ethernet Encapsulation	HDLC-over-E1 GFP encapsulation (on next version)
E1 Loop Back	Support local and remote loop back
BERT function	Inner BERT enables a flexible way of testing E1 links
Enhanced E1 link monitor	Traffic counter provides an effective E1 link monitoring by statistics collection of Rx, Tx, total and error packets amount on E1 port.
Clock Mode	Master and Slave
Maximum Transmission Unit	1536 bytes
MAC Address Table	4096 MAC Address
Trunking	Link Aggregation of Ethernet port enables a redundant Ethernet access
Flow control	IEEE802.3x in full duplex
VLAN	VLAN transparent forwarding VLAN swapping, stacking (Q-in-Q) and rewriting (on next version)
Transparent transmission	Support BPDU, Dot1x, GMRP, GVRP, and ICMP on per port
Management	In-band and out-of-band (SNMP, Telnet, CONSOLE) management
Enhanced remote management	Remote RC953-FE4E1/8E1 can be remotely managed by RC953-8FE16E1 even through DXC equipment in the network
Upgrade	Support local and remote on-line upgrade through FTP/TFTP

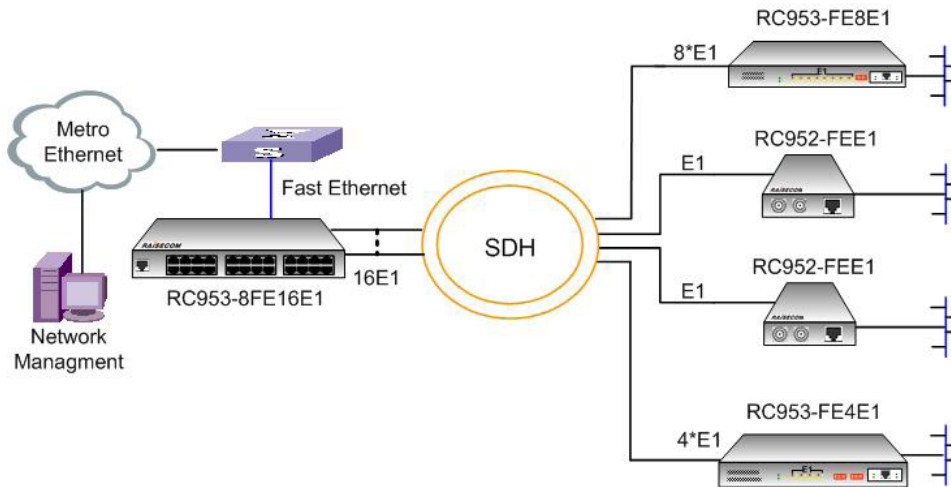
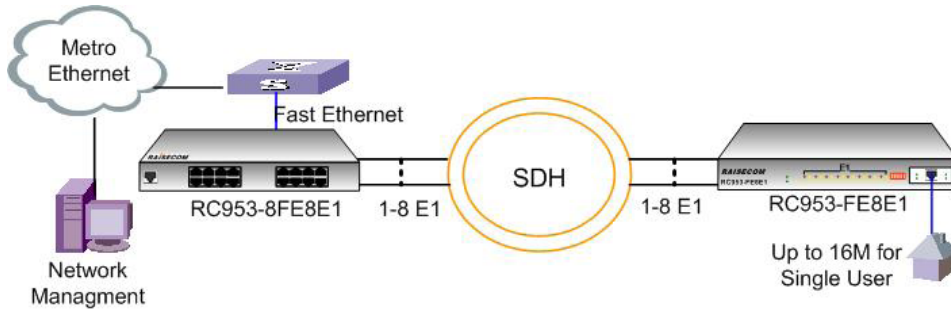


RC953-8FE16E1 Inverse Multiplexing Ethernet Gateway

### Specification

Fixed port	8* 10/100BaseT: Speed: 10/100BaseT Connector: RJ-45 MDI/MDIX auto crossover IEEE802.3x flow control 16*E1: Connector: RJ-45 or BNC Impedance: 120 or 75 ohm Line coding: HDB3
CONSOLE Port	RJ-45
System Indicator	SYS, Flashing indicates CPU works normally
Power Supply Indicaor	PWR, ON indicates the device is powered on; PWR1, ON indicates first power supply works normally; PWR2, ON indicates second power supply works normally;
Indicators for Ethernet ports	LNK/ACT and 100M indicator for each Ethernet port
Indicators for E1 ports	LOS, LAL and RAL for each E1 port
Dimension	430(W)*266(D)*1U(H)mm
Weight	3.3kg
Power supply	AC: 90~264V, 47~63Hz DC: - 36~75V
Power consumption	≤ 20W (at max load)
Working ambience	Temp: 0~45 centigrade RH: 20~90% non-condensing
Storage ambience	Temp: -25~85 centigrade RH: 20~90% non-condensing

## Typical Application



## Compliance

Standards & protocols	IEEE802.3 Ethernet IEEE802.3x full duplex on 10BaseT, 100BaseTX ports IEEE802.3u 100BaseTX SNMPv1/v2c/v3 ITU-T G.703 ITU-T G.704 ITU-T G.823
-----------------------	---

## Ordering Information

RC953-8FE16E1-BL-AC	Standalone, Inverse Multiplexing Ethernet Gateway, 16*E1, 120ohm balanced RJ-45 E1 connector with redundant AC power supply
RC953-8FE16E1-BL-DC	Standalone, Inverse Multiplexing Ethernet Gateway, 16*E1, 120ohm balanced RJ-45 E1 connector with redundant DC power supply
RC953-8FE16E1-AC	Standalone, Inverse Multiplexing Ethernet Gateway, 16*E1, 75ohm unbalanced BNC E1 connector with redundant AC power supply
RC953-8FE16E1-DC	Standalone, Inverse Multiplexing Ethernet Gateway, 16*E1, 75ohm unbalanced BNC E1 connector with redundant DC power supply
RC953-8FE8E1-BL-AC	Standalone, Inverse Multiplexing Ethernet Gateway, 8*E1, 120ohm balanced RJ-45 E1 connector with redundant AC power supply
RC953-8FE8E1-BL-DC	Standalone, Inverse Multiplexing Ethernet Gateway, 8*E1, 120ohm balanced RJ-45 E1 connector with redundant DC power supply
RC953-8FE8E1-AC	Standalone, Inverse Multiplexing Ethernet Gateway, 8*E1, 75ohm unbalanced BNC E1 connector with redundant AC power supply
RC953-8FE8E1-DC	Standalone, Inverse Multiplexing Ethernet Gateway, 8*E1, 75ohm unbalanced BNC E1 connector with redundant DC power supply